



**Video Management Software**





POWERED BY  **inaxsys**



## **ABOUT ARKIV**

Arkiv is a powerful and scalable video management platform by Inaxsys, designed for seamless and secure surveillance in any environment.



## **WHY CHOOSE ARKIV ?**

From advanced security to unmatched scalability, Arkiv VMS gives users full control to manage operations efficiently and confidently.



*Advanced protection tools*



*Grows with your needs*



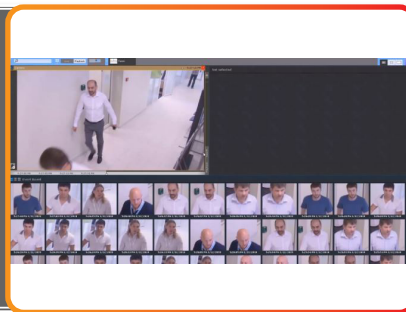
*Smart, actionable insights*

**GET STARTED WITH ARKIV !**



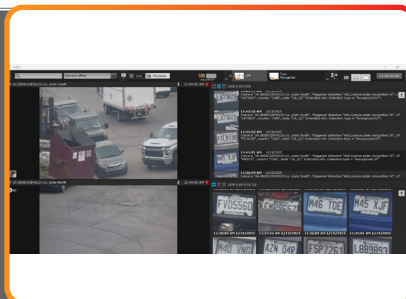
## FACE AND LICENCE PLATE SEARCH

The user uploads a photo, and the system compares the face to profiles in the database, returning scenes with visually similar individuals.



## FACE AND LICENCE PLATE RECOGNITION

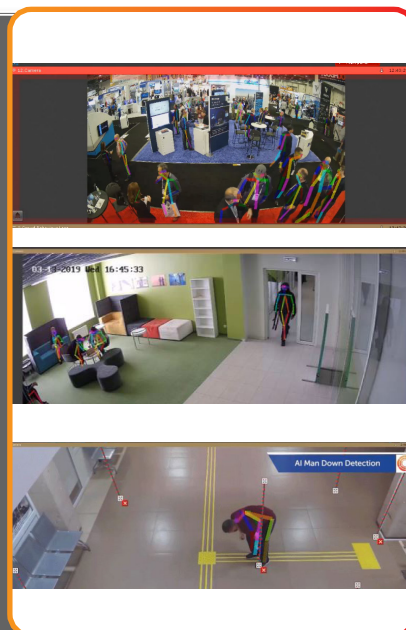
Recognized license plates are stored in a database, and advanced rules and algorithms are used to identify potential matches through character substitution and similar techniques.



## BEHAVIORAL ANALYTICS

Arkiv's real-time threat detection uses behavioral analytics to identify potentially dangerous situations through human posture recognition. Key features include:

- Active Shooter Detector : Identifies armed individuals and alerts on-site security.
- Hands-Up Detector: Detects raised arms indicating distress or surrender.
- Sitting Person Detector: Flags unusual seated behavior in sensitive zones.
- Man Down Detector: Spots collapsed individuals signaling emergencies.



## FIRE AND SMOKE DETECTION TOOL

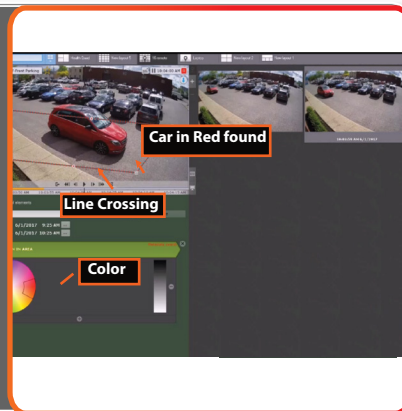
Arkiv's intelligent fire and smoke detection tool ensures continuous safety by providing early fire detection in areas where traditional sensors are ineffective, significantly reducing damage and risk.





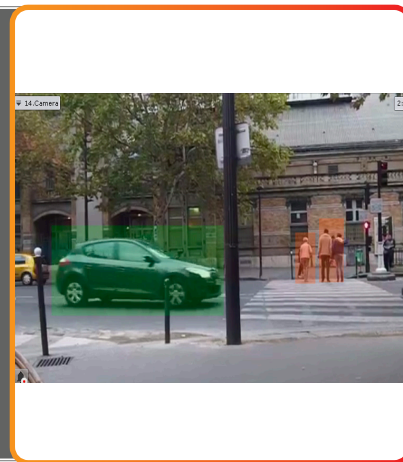
## POST ANALYTICS

Post-Analytics analyzes live video and generates a metadata stream describing moving objects in the scene, recorded alongside the video. To find a specific event, users can search the archive using filters like line crossing, motion, object color, size, and more. Results appear within seconds as thumbnails, and searches can be saved per camera.



## TRACKING & COUNTING SPECIFIC OBJECT TYPE

The neural network enhances Object Tracker accuracy by detecting specific objects like people or vehicles and reducing false alarms in busy scenes. It supports analytics such as loitering, line crossing, and object tracking. The Neural Counter tallies moving or static objects by type, offering insights beyond security. Networks can also be trained with on-site video for tailored performance.



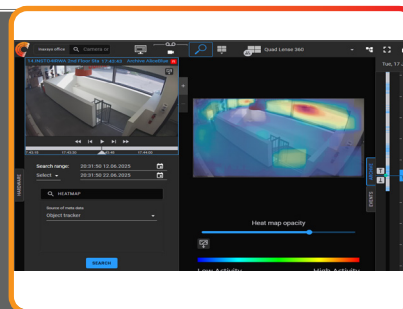
## OFFLINE ANALYTICS

Import any video footage and analyze it using forensic search with features like Post-Analytics, Facial Search, and License Plate Search.



## HEAT MAP

The heat map visually displays visitor activity such as foot traffic and time spent in different store areas. It's generated from tracking data, either overall or filtered by forensic search criteria.





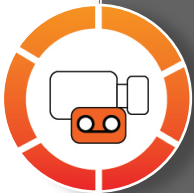
### POS SUPERVISION

Arkiv links cash register data to video feeds, displaying receipt text over the video or in a separate panel for full checkout visibility. Receipt data can be used to retrieve corresponding POS transaction footage.



### VISITOR COUNTER

The visitor counter tracks every individual entering or exiting a secured area, providing valuable data for sales estimation and market research.



### QUEUE MANAGEMENT

Queue management detects the number of people in waiting areas, helping optimize staff allocation and enhance customer experience.



### AGE & GENDER ESTIMATION

The facial recognition tool estimates visitor age and gender, with saved data available for marketing, analysis, and other insights.

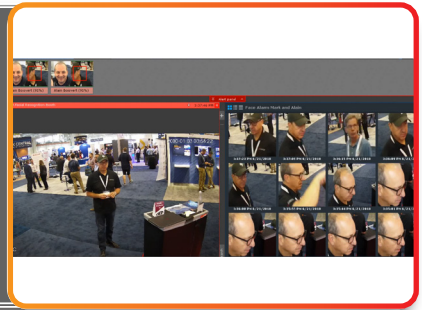






## **FACIAL RECOGNITION**

Upload a photo to configure an automatic scenario. Arkiv will alert you each time the person is recognized. Ideal for identifying shoplifters or VIP customers.



## **SYSTEM UPDATE**

Servers can be updated silently by selecting a .zip archive or providing a web link, while client software updates automatically when connecting to a server with a newer Arkiv VMS version.



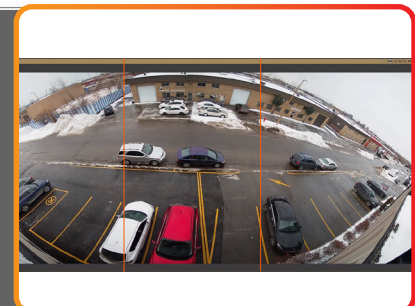
## **TARGET AND FOLLOW STANDARDS**

Target & Follow Standard simplifies surveillance by predicting which camera will next capture an object after it leaves another's field of view. Cameras must be linked to a site map with defined positions and coverage. When an operator selects a moving object, Arkiv calculates its trajectory and highlights the destination camera. This feature also works with recorded video, instantly switching to the relevant footage and playback point.



## **FRAME MERGING**

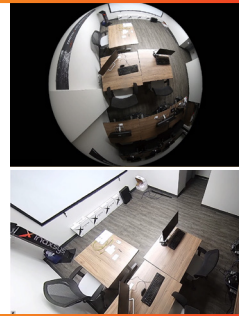
The Frame Merging tool allows you to create panoramic views using up to three camera feeds, zoom into any part of the panoramic image via the dialogue board, and export the result as standard .avi or .mkv files.





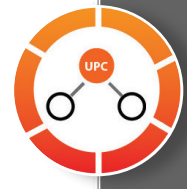
## IMAGE DEWARPING

Image correction (dewarping) is handled by the client workstation's GPU, minimizing CPU load. Multiple dewarped views with different aspect ratios are displayed, and Arkiv supports both standard fisheye and Immervision panomorph lenses.



## VIDEO FOOTAGE MANAGEMENT

Arkiv supports on-camera (edge) storage by automatically detecting SD cards when cameras are added to the system, allowing users to view and continuously replicate video, audio, and metadata. Through the Interoperability Driver, video can also be synced between independent Arkiv systems, enabling centralized storage for vehicle-based NVRs. Enhanced export features include instant still frame and video export, password-protected .zip files, multi-camera export, file splitting, frame dropping (pruning), privacy masking, image zone export (including dewarped fisheye frames), and exporting user comments.



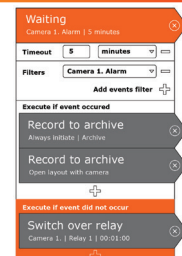
## UDP & MULTICASTING

Arkiv includes tools to reduce bandwidth and improve system efficiency. By using a server to remote your computer via UDP, you can stream live video. Multicasting further optimizes resources by freeing up network capacity.



## MACROS

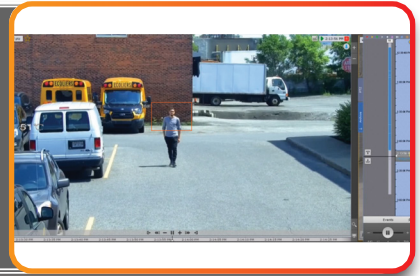
Arkiv supports flexible event-based automation through macros using IF...THEN logic, enabling users to configure unlimited system or device-level actions in response to specific events.





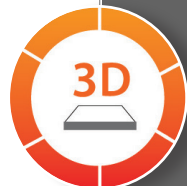
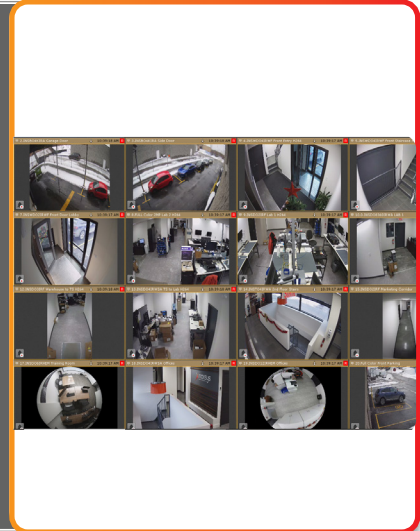
## AUTOZOOM

The autozoom feature automatically enlarges and tracks objects as they appear and move within the field of view. It works with both fixed and fisheye cameras.



## VIDEO WALL MANAGEMENT

- Effectively manage video walls and layouts across large distributed sites with Arkiv: Send any layout to any Arkiv workstation in the system.
- Highlight events by drawing an operator's attention to specific camera feeds
- Broadcast events to all operators via video wall layout distribution.
- Use any multi-monitor Arkiv workstation as a video wall.
- Control video walls remotely from any client within the Arkiv domain.



## INTERACTIVE 3D MAP

The interactive 3D map displays camera locations and live views in a single window, allowing instant identification of each camera's position. Cameras are color-coded by status, and in Immersion mode, semi-transparent video overlays the map to show object location and movement in real time.



## CROSS-SYSTEM CLIENT

The Cross-System Client allows operators to connect to multiple surveillance servers across different domains from a single workstation. All settings and cameras are unified in one interface, eliminating the need for a complex distributed configuration, ideal for retail chains and gas station networks.



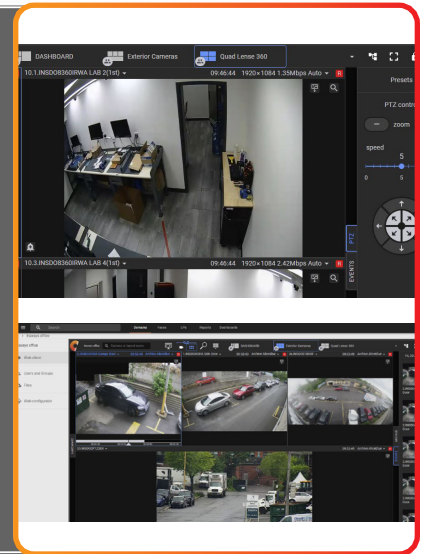




## WEB CLIENT

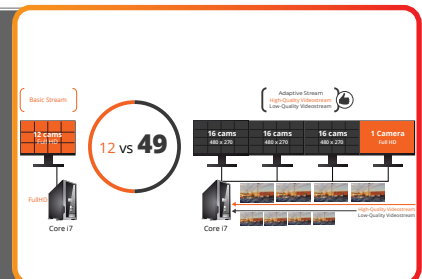
The web client connects via HTTPS and supports H.264, H.265, MJPEG, multi-streaming cameras, and desktop layouts. It allows users to:

- View live/recorded video with audio
- Use digital zoom and bookmarks
- See motion heat maps and alarm events
- Access camera and archive stats
- Export frames and videos
- Control PTZ cameras
- Search by face, license plate, events, and time intervals (Post-Analytics, TimeSlice).



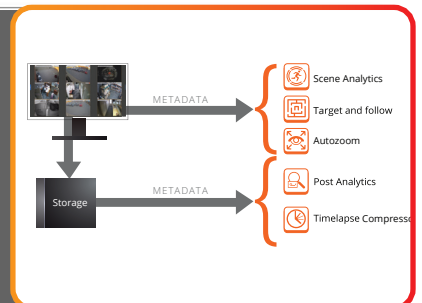
## ADAPTIVE STREAM

The adaptive stream feature automatically selects the optimal video stream based on the resolution at which it's displayed on the client, optimizing bandwidth between the camera, server, and client.



## METADATA FROM IP DEVICES

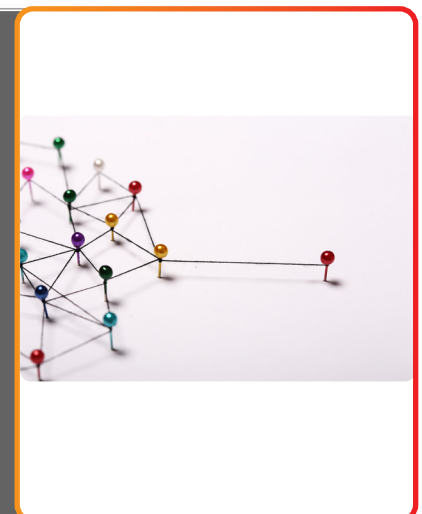
Metadata enables real-time analysis and forensic search by being generated directly on the cameras, eliminating the need for video decompression on the server. This reduces CPU load and allows the server to handle more video streams.



## EXTERNAL DEVICE SUPPORT

Arkiv offers unified integration with external systems like access control, security panels, and third-party software. It lets you:

- Search events by keyword
- Save events to the database
- Receive external event data
- Display event captions over video
- Link events to recorded footage
- Show real-time event data in a dedicated panel





## LDAP AUTHENTICATION

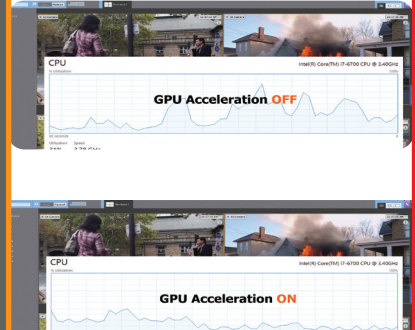
Arkiv streamlines user management by integrating with LDAP, allowing operators to log in with domain credentials while sysadmins can import users, assign access rights based on directory groups, and automatically remove users deleted from the LDAP server.



## HARDWARE ACCELERATED VIDEO DECODING

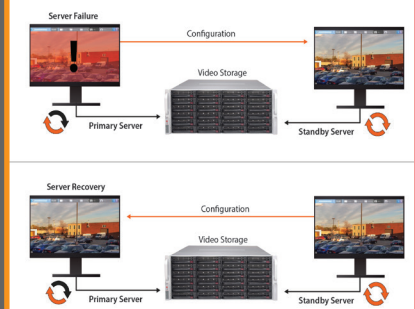
GPU Acceleration in Arkiv speeds up processing and reduces CPU load. It enables:

- Faster video decoding
- More cameras per server
- More video channels on client displays
- Higher-resolution streams with greater server capacity



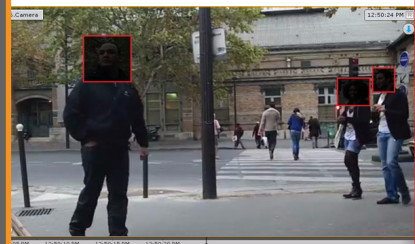
## FAILOVER

Failover quickly switches to a standby server when communication with the primary server is lost. The standby server automatically takes over all functions from the offline or malfunctioning server. Live video streaming and recording resume immediately. You can suspend any server in the cluster with no system downtime, e.g. for maintenance.



## PRIVACY SETTINGS

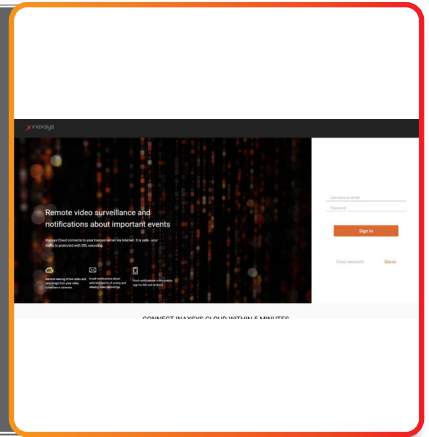
This tool supports GDPR compliance by allowing you to mask static or moving objects and hide faces in recorded video for specified user roles. Masked areas appear as solid color during playback, search, and in exported footage.





## SECURITY POLICY

Arkiv lets you configure user security by setting password rules, storing history, enforcing renewals, blocking multiple sessions, and locking accounts after failed logins. User events log IP and MAC addresses, and exports include usernames. Access can be restricted by IP range or require admin approval.



## FIRE AND SECURITY ALARMS SYSTEM

Arkiv, connects effortlessly with fire and security alarm systems, allowing you to monitor events in real time and manage detection devices, including sensors, I/O modules, and other integrated components all from a single interface.



## MULTICAMERA TRACKING

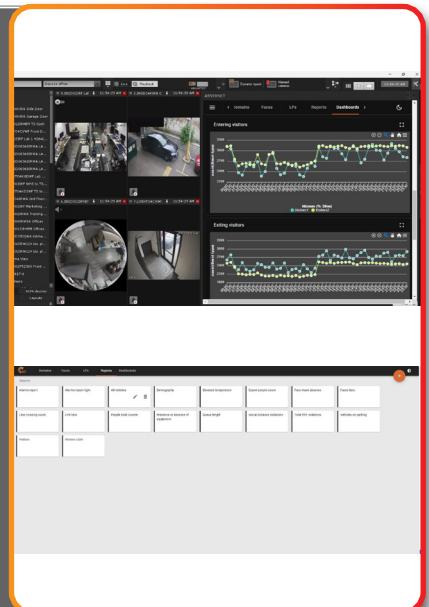
Arkiv enables continuous object tracking across multiple camera fields of view by analyzing and matching visual appearance. This add-on allows seamless handoff of targets between non-overlapping cameras, enhancing situational awareness in wide or complex environments.



## ARKIV NET - CLOUD SERVICE

ArkivNET is a free cloud service that securely connects to your Arkiv surveillance servers via SSL encryption. It enables you to:

- Use all Web Client features for live and recorded video
- Manage users and roles for Arkiv VMS
- Receive email and push notifications with event footage
- Store and activate Arkiv license files
- Create custom reports by combining POS, visitor, demographic, and queue data
- Access reports remotely via the web interface

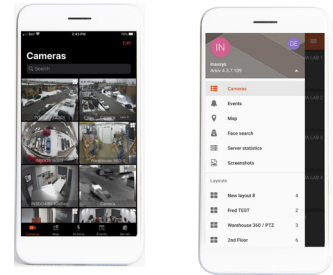




## **MOBILE CLIENT**

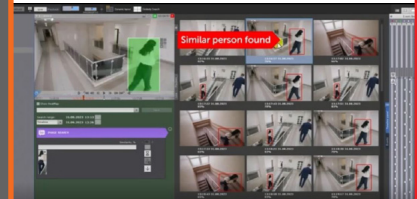
Our apps offer a range of features, allowing you to:

- Use interactive maps
- Apply digital zoom
- Control PTZ cameras
- Run macros
- Operate fisheye cameras
- Receive push notifications
- View live and recorded video



## **SIMILARITY SEARCH**

Enables Arkiv to perform similarity-based person searches by analyzing and comparing the shape and visual features of individuals across video footage. This functionality enhances identification accuracy in surveillance scenarios by leveraging appearance-based matching. single interface.



## **INTEGRATION PERIMETER INTRUSION DETECTION SYSTEM**

Arkiv enables integration with Perimeter Intrusion Detection Systems to monitor breach events and suspicious activity along secured boundaries. This integration enhances early threat detection and supports proactive perimeter protection.



## **INTEGRATION WITH ACCESS CONTROL SYSTEM**

Arkiv allows seamless integration with Access Control Systems to monitor access events and control door readers. This capability enables centralized management of entry points and enhances overall security operations.

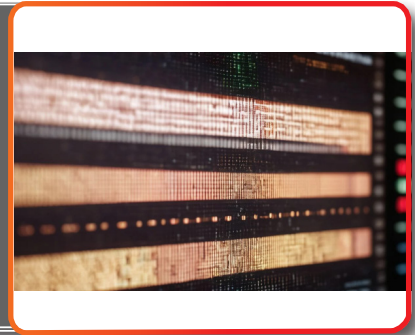






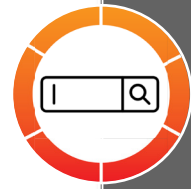
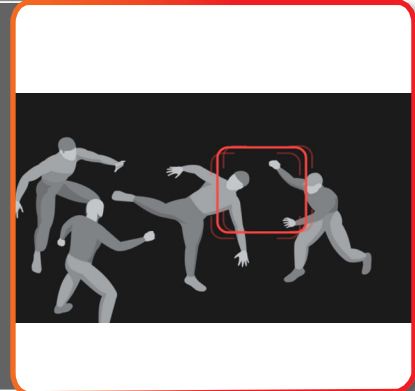
## **AUDIO ANALYTICS**

Enables Arkiv to perform advanced audio analytics, detecting sounds such as glass breaking, smoke alarms, gunshots, loud screams, baby cries, sirens, and dog barks. This add-on module enhances situational awareness.



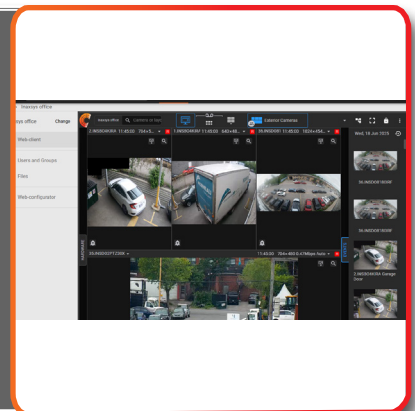
## **FIGHT DETECTION**

The Fight Detector uses AI to identify violent incidents in real-time by analyzing visual cues like raised limbs, aggressive actions, and close proximity. It delivers instant alerts to enhance safety and response times in public and private spaces. Built for security teams and law enforcement, it automates monitoring and supports proactive incident management.



## **META DETECTOR**

Detect objects and events in real time using natural language. Just describe what you're looking for like a "running human" or "white car at a crosswalk" and the system identifies it instantly in live video. This label-free, AI-powered approach interprets attributes like size, color, and position for accurate, context-aware detection, ideal for security and investigations.




## **CROWD ESTIMATION**

The Crowd Estimation tool tracks real-time crowd sizes, triggering alerts when limits are exceeded, ideal for public events, transport hubs, and retail spaces, with support for up to 10,000 people. For groups under 10, use the Neural Counter for greater precision. Integrated macros enable automated responses for safer, more efficient crowd management.





 <b>FUNCTIONALITY</b>	ARKIV Professional	ARKIV Enterprise	ARKIV Unified
Maximum number of servers in a distributed system	30	30	Unlimited
Maximum number of cameras in a system	Unlimited	Unlimited	Unlimited
Real time analytics (Object Tracker)	✓	✓	✓
Edge analytics (camera metadata)	✓	✓	✓
Edge storage (playback only)	✓	✓	✓
Adaptivestream bandwidth management	✓	✓	✓
Interactive 3D Maps	✓	✓	✓
Web client	✓	✓	✓
Time Slice search (search by time intervals)	✓	✓	✓
Macros (event response scenarios)	✓	✓	✓
ONVIF Profiles G, S, T	✓	✓	✓
Video bookmarking (searchable text comments)	✓	✓	✓
FrameMerge	✓	✓	✓
ArkivNet cloud service	✓	✓	✓
ArkivNet Reports	✓	✓	✓
Cross-System Client	✓	✓	✓
Storage replication	--	✓	✓
Failover	--	✓	✓
Videowall	--	✓	✓
LDAP service	--	✓	✓
Datacenter Domain Unification	--	--	✓
<b>AI Features and Retail License Pack</b>			
Post-Analytics smart forensic search	Add-on	✓	✓
Multi-camera face search	Add-on	✓	✓
Face mask detection	Add-on	✓	✓
Multi-camera LPR/ANPR search*	Add-on	✓	✓
Tag&Track (PTZ object tracking)	Add-on	✓	✓
AI human/vehicle detection	Add-on	✓	✓
AI fire/smoke detection	Add-on	✓	✓
People counting	Add-on	✓	✓
Heat Map	Add-on	✓	✓
Queue detection	Add-on	✓	✓
QR/Barcode reader	Add-on	✓	✓
Multi-camera object tracking**	Add-on	Add-on	✓
Similarity Search	--	Add-on	✓
Crowd estimation	Add-on	Add-on	Add-on
Meta-detector	Add-on	Add-on	Add-on
Fight detection	Add-on	Add-on	Add-on
<b>Personal Protective Equipment Detection</b>			
Helmets	Add-on	Add-on	Add-on
Hi-viz vests	Add-on	Add-on	Add-on
Protective clothing	Add-on	Add-on	Add-on

Human Behavior Analytics			
Man down	Add-on	Add-on	Add-on
Raised arms	Add-on	Add-on	Add-on
Squatting man	Add-on	Add-on	Add-on
Social distancing violation	Add-on	Add-on	Add-on
Additional Modules			
Integration with Access Control System (licensed as an add-on in all editions)	50 readers max.	100 readers max.	Unlimited readers
Integration with Fire/Security Alarm System	Add-on	Add-on	Add-on
Integration with Perimeter Intrusion Detection System	Add-on	Add-on	Add-on
Support for external event sources (POS, other devices)	Add-on	Add-on	Add-on
Facial recognition (positive/negative watchlists)	Add-on	Add-on	Add-on
LPR/ANPR (positive/negative watchlists)*	Add-on	Add-on	Add-on
Custom AI Analytics	Add-on	Add-on	Add-on
Water level detection	Add-on	Add-on	Add-on
Audio Analytics	Add-on	Add-on	Add-on